

SPECIFICATIONS



ENGINE

Model:	ISUZU 4BG1TABGA
Type:	Direct injection, water-cooled, 4-cycle diesel engine with turbocharger
No. of cylinders:	4
Bore and stroke:	105 mm × 125 mm
Displacement:	4,329 cc
Rated power output:	62.5 kW NET at 2,050 rpm 85 PS NET at 2,050 rpm
Max. torque:	313 N·m at 1,600 rpm 32 kgf·m at 1,600 rpm



HYDRAULIC SYSTEM

Pump:	Two variable displacement pump
Max. discharge flow:	2 × 118 liters/min
Max. discharge pressure:	
Excavating circuit (main):	34.3 MPa (350 kgf/cm ²)
Propel circuit:	34.3 MPa (350 kgf/cm ²) -SK135SRLC 37.7 MPa (385 kgf/cm ²) -SK135SRL
Swing circuit:	28.0 MPa (285 kgf/cm ²)
Control circuit:	5.0 MPa (50 kgf/cm ²)
Pilot control pump:	Gear type
Control valves:	6-spool
Oil cooler:	Air cooled type (Finned tube, forced ventilation)



CAB & CONTROL

All-weather, sound suppressed steel cab is mounted on the silicon-sealed viscous mount. Large, tinted safety-glass windows, with pull type upper front window and removable lower front windows. Four-way adjustable dual-slide seat with wrist-action levers, electric rotary-type engine throttle, safety-lock lever, and easy-to-read multi-display monitor. Ventilated, pressurized climate control system, floor mat, intermittent windshield wiper with two-jet washer, light-action cab door, skylight, ashtray, cab light (interior), coat hook, cup holder, and utility box.



TRAVEL SYSTEM

Drive motors:	Independent, axial-piston, two-step motor each side
Brakes:	Independent, disc parking brake for each side
Track shoes:	46 each side- SK135SRLC 42 each side- SK135SRL
Travel speed:	6.0/3.5 km/h- SK135SRLC 5.1/2.8 km/h- SK135SRL
Gradeability:	70 % (35°)
Drawbar pulling force:	127 kN (13,000 kgf) - SK135SRLC 157 kN (16,000 kgf) - SK135SRL (SAE J1309 MAY 91)



SWING SYSTEM

Brake:	Hydraulic, locking automatically when the swing control lever is in neutral position
Parking brake:	Hydraulic disc brake
Swing speed:	11.7 rpm
Tail swing radius:	1,425 mm
Min. front swing radius:	2,380 mm



BOOM, ARM, AND BUCKET

Boom cylinders:	100 mm × 1,038 mm
Arm cylinder:	115 mm × 1,150 mm
Bucket cylinder:	95 mm × 885 mm

DOZER BLADE

Dimensions:	2,490 mm (width) × 570 mm (height)
Working range (up/depth):	490 mm × 540 mm



REFILLING CAPACITIES AND LUBRICATION

Fuel tank:	168 liters
Cooling system:	18 liters
Engine oil:	13 liters
Track drives:	2 × 2.5 liters
Swing drive:	1.7 liters
Hydraulic oil:	
Tank (oil level):	94 liters
Hydraulic system:	140 liters



ATTACHMENTS

Uses	Backhoe bucket								
	General purpose								
Bucket capacity (SAE heaped)	m ³	0.24	0.31	0.38	0.45	0.50	0.57	0.70	
Bucket capacity (Struck)	m ³	0.20	0.23	0.28	0.35	0.45	0.50	-	
Opening width	With side cutters	mm	600	700	800	900	1,000	1,100	-
	Without side cutters	mm	500	600	700	800	900	1,000	1,150
No. of bucket teeth		3	3	4	4	5	5	5	
Combinations	2.45 m arm	○	○	○	○	○	×	×	
	2.95 m arm	○	○	○	○	×	△	×	

○ Recommended △ Loading only × Not recommended

WORKING RANGES

SK135SRLC

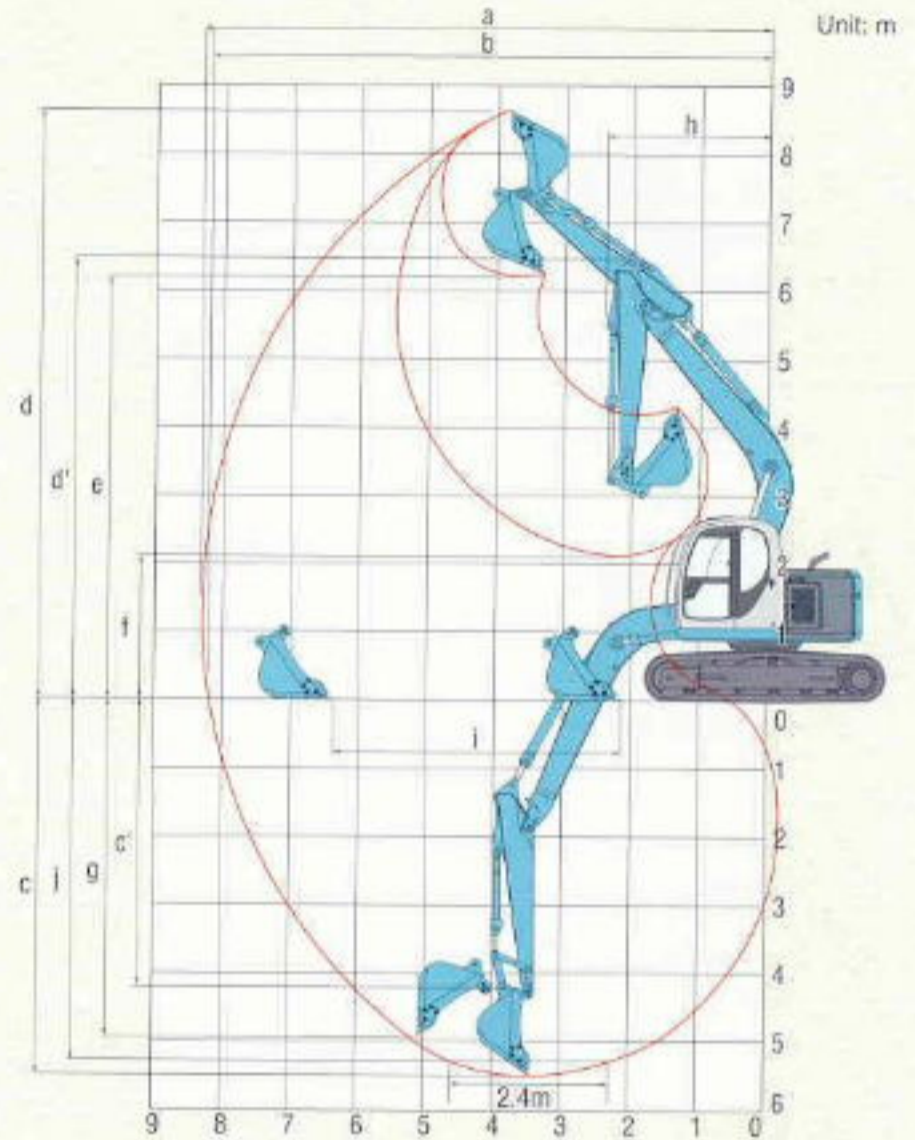
Unit: m

Range	Arm	Std. 2.45	2.95
a - Max. digging reach		8.34	8.77
b - Max. digging reach at ground level		8.21	8.65
c - Max. digging depth		5.5	6.01
c' - Max. depth of bucket hinge pin		4.29	4.79
d - Max. digging height		8.83	8.86
d' - Max. height of bucket hinge pin		7.43	7.66
e - Max. dumping clearance		6.20	6.44
f - Min. dumping clearance		2.12	1.65
g - Max. vertical wall digging depth		4.96	5.25
h - Min. front swing radius		2.38	2.65
i - Horizontal digging stroke at ground level		4.24	4.77
j - Digging depth for (2.4 m) flat bottom		5.30	5.63
Bucket capacity SAE heaped	m ³	0.50	0.38

DIGGING FORCE

Unit: kN(kgf)

Arm length	2.45 m	2.95 m
Bucket digging force	88.2 (8,990)	
Arm crowding force	63.6 (6,490)	58.1 (5,920)



SK135SRL

Unit: m

Range	Arm	Std. 2.45	2.95
a - Max. digging reach		8.34	8.77
b - Max. digging reach at ground level		8.17	8.61
c - Max. digging depth		5.32	5.82
c' - Max. depth of bucket hinge pin		4.09	4.59
d - Max. digging height		8.83	9.05
d' - Max. height of bucket hinge pin		7.62	7.86
e - Max. dumping clearance		6.40	6.63
f - Min. dumping clearance		2.31	1.85
g - Max. vertical wall digging depth		4.77	5.06
h - Min. front swing radius		2.38	2.65
i - Horizontal digging stroke at ground level		4.27	4.80
j - Digging depth for (2.4 m) flat bottom		5.11	5.63
Bucket capacity SAE heaped	m ³	0.50	0.38

DIGGING FORCE

Unit: kN(kgf)

Arm length	2.45 m	2.95 m
Bucket digging force	88,2 (8,990)	88,2 (8,990)
Arm crowding force	63,6 (6,490)	58,1 (5,920)

